

CASE
CONSTRUCTION

COMPACT TRACK LOADERS

TR270 | TR320 | TV380



Case Delivers Full-Service Solutions

EQUIPMENT | FINANCING | PARTS & SERVICE

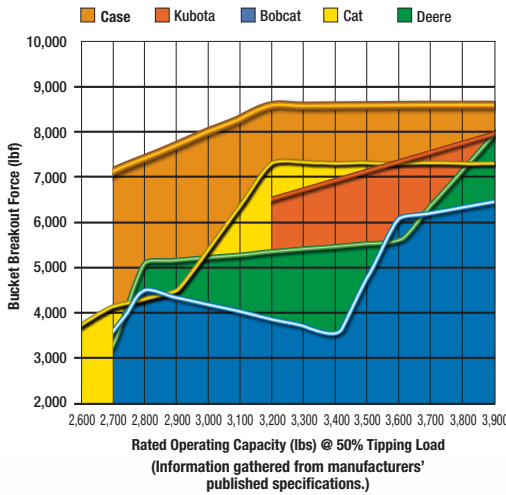
Introducing a **new generation**

Get more done

Climb inside a new Case compact track loader (CTL) and you'll feel the difference. Engineered from the ground up, this new line-up of equipment delivers more power. And that's just the start.

Our new CTLs delivers exceptional bucket breakout force (up to 8,585 lb) and hinge-pin height. All three models deliver superior horsepower, giving you the muscle to get the job done faster.

Plus, they'll run all day long, thanks to improved fuel efficiency and new 20- to 25.5-gallon fuel tanks. One demonstration will prove it's time to trade up.



Compare us to the competition. You'll feel the superior breakout force.



Comfort for the long haul

There's no comparison. Our engineers designed a cab that delivers more room, visibility, comfort and control.

Not only are they as much as 25 percent larger, but they also feature dozens of upgrades, such as optional heated air-suspension seats, air conditioning, a removable front door and side windows.

Our revolutionary ultra-narrow wire side-screen design and larger glass windows give you more visibility. With the Case-exclusive side lighting, you'll get more done – day or night.

Your operators will be comfortable and productive in the spacious cab.



of Case compact track loaders!

Dozer-style undercarriage

Our dozer-style undercarriage is engineered to hold fast on steep slopes and take command of muddy or sandy terrain. The undercarriage has a rigid track frame with fewer moving parts, so it is more durable and easier to maintain than suspension track systems.

The technology on our rollers and idlers reduces maintenance costs and increases undercarriage life. Plus, our new, narrow chassis width makes it easy to load and unload on trailers.



Designed to take on the toughest challenges, these new CTLs are engineered to boost your productivity and profits.

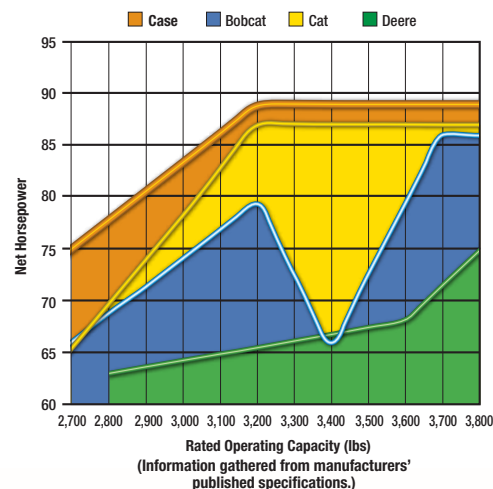
Muscle to spare

Case compact track loaders have the muscle to get the job done – with rated operating capacities up to 4,200 pounds.* Our radial-lift TR270 and TR320 models are engineered for digging, prying and pushing, while the vertical-lift TV380 is for load-and-carry jobs. Plus, we deliver superior hinge pin height – which positions the bucket higher to load trucks faster and easier.

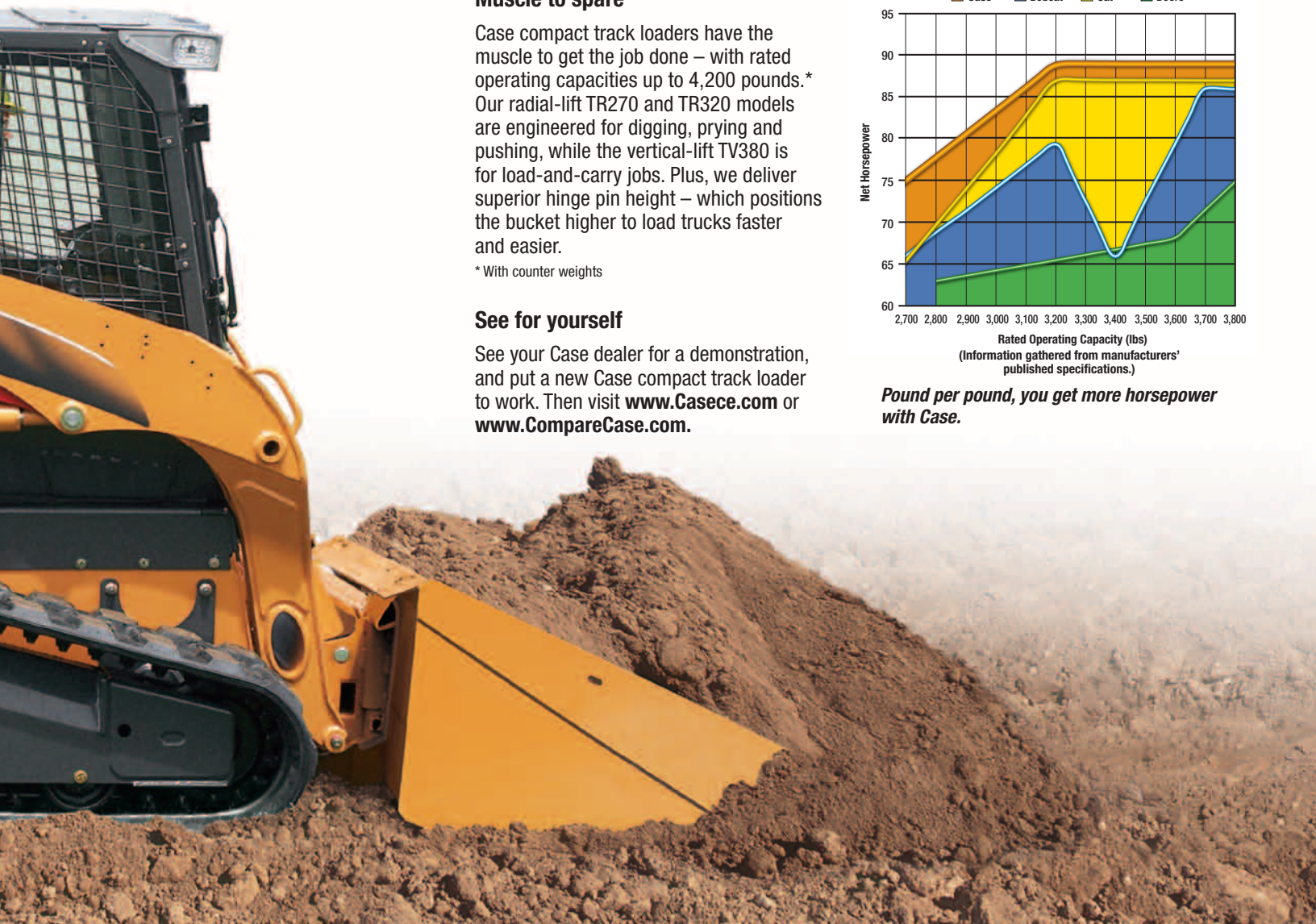
* With counter weights

See for yourself

See your Case dealer for a demonstration, and put a new Case compact track loader to work. Then visit www.Casece.com or www.CompareCase.com.



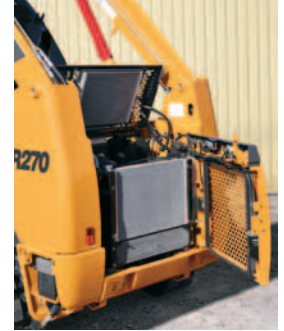
Pound per pound, you get more horsepower with Case.



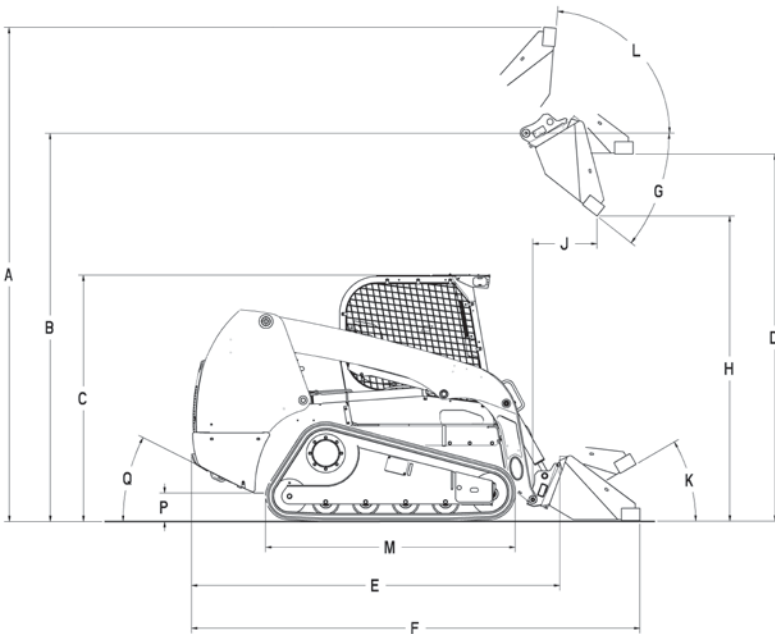
SPECIFICATIONS	TR270	TR320	TV380
Engine	Case 432T/M3	Case 432T/M3	Case 432T/M3
Gross hp (kW) @ 2500 rpm	74 hp (55 kW)	90 hp (67 kW)	90 hp (67 kW)
Net hp (kW) @ 2500 rpm	70 hp (52 kW)	84 hp (63 kW)	84 hp (63 kW)
Peak torque @ 1400 rpm	203 lb-ft (275 Nm)	251 lb-ft (340 Nm)	251 lb-ft (340 Nm)
Displacement – cu in (L)	195 (3.2)	195 (3.2)	195 (3.2)
Rated operating load			
50% – lb (kg)	2,700 (1225)	3,200 (1451)	3,800 (1723)
35% – lb (kg)	1,890 (859)	2,240 (1018)	2,660 (1209)
Tipping load – lb (kg)	5,400 (2450)	6,400 (2902)	7,600 (2446)
Breakout forces			
Bucket cylinder – lb (kN)	7,145 (31.8)	8,585 (38.2)	8,585 (38.2)
Operating weight – lb (kg)	8,200 (3720)	9,600 (4355)	10,200 (4625)

Superior serviceability

Ask your technicians. Case has a reputation for easy-to-maintain and service equipment. The new Case CTLs are no exception, with features such as remote-mounted filters, ground-line access for daily maintenance checks and grouped service checkpoints.



Need help? Our customer support team is on call with a Customer Assistance Hotline that operates from 8 a.m. to 11 p.m. seven days a week (except Sundays, December through March).



	TR270	TR320	TV380
A. Overall operating height	153.5 in (3.89 m)	157.8 in (4.01 m)	166 in (4.22 m)
B. Height to bucket hinge pin	123 in (3.12 m)	126.5 in (3.21 m)	131.6 in (3.34 m)
C. Height to top of ROPS	78.7 in (1.99 m)	80.4 in (2.04 m)	80.4 in (2.04 m)
D. Bottom of bucket fully raised	NA	NA	NA
Overall length –			
E. without attachment	105.1 in (2.67 m)	116 in (2.95 m)	116 in (2.95 m)
F. with bucket	NA	NA	NA
G. Dump angle	39.6°	38.3°	53.5°
H. Dump height with bucket	98.2 in (2.49 m)	102.2 in (2.6 m)	102.2 in (2.6 m)
J. Dump reach @ max. height	22.3 in (0.57 m)	21.2 in (0.54 m)	31 in (0.79 m)
Max. attachment rollback –			
K. at ground level	31°	29.7°	34°
L. at full height	98.6°	99.7°	86°
M. Wheelbase	NA	NA	NA
P. Ground clearance	8 in (0.20 m)	9.5 in (0.24 m)	9.5 in (0.24 m)
Q. Angle of departure	32°	32°	32°
Overall width			
	66 in (1.68 m)	74 or 76 in (1.88 or 1.93 m)	74 or 76 in (1.88 or 1.93 m)



©2010 CNH America LLC. All rights reserved. Case is a registered trademark of CNH America LLC. Any trademarks referred to herein, in association with goods and/or services of companies other than CNH America LLC, are the property of those respective companies. Printed in U.S.A.



SAFETY™ NEVER HURTS

Always read the operator's manual before operating any equipment. Inspect equipment before using it, and be sure it is operating properly. Follow the product safety signs and use any safety features provided.

All engines meet current EPA emission regulations.

All specifications are stated in accordance with SAE standards or recommended practices, where applicable.

IMPORTANT: Case Construction Equipment Inc. reserves the right to change these specifications without notice and without incurring any obligation relating to such change. Availability of some models and equipment builds vary according to the country in which the equipment is used. The illustrations and text may include optional equipment and accessories and may not include all standard equipment. Your Case dealer/distributor will be able to give you details of the products and their specifications available in your area.

