

CASE II
AGRICULTURE

MAXXUM[®] SERIES TRACTORS
90 – 120 PTO HP



EVERY SINGLE DAY, YOU DEMAND MORE. MORE FROM THE LAND. MORE FROM YOURSELF. MORE FROM YOUR EQUIPMENT. WHICH IS WHY WE ALSO DEMAND MORE. MORE POWERFUL ENGINES. MORE PRODUCTIVITY-BOOSTING FEATURES. MORE APPROACHABLE AND KNOWLEDGEABLE CASE IH EXPERTS. AND WE DO ALL THIS TO BETTER SERVE YOU AND THE NEEDS OF YOUR OPERATION.

POWERFUL, VERSATILE AND ECONOMICAL, THE MAXXUM TRACTOR IS A MULTI-PURPOSE WORKHORSE THAT OFFERS YOU MORE. MORE FLEXIBILITY, WITH A RANGE OF OPTIONS TO MEET YOUR NEEDS. MORE COMFORT AND MANEUVERABILITY SO YOU CAN KEEP MOVING. MORE HIGH-PRODUCTIVITY FEATURES TO MAXIMIZE EFFICIENCY. AND MORE SIMPLICITY FOR EASIER SERVICING.



FOR THOSE WHO DEMAND MORE



LEADING THE INDUSTRY	4
CAB ENVIRONMENT, LIGHTING & CONTROLS	6
ENGINE & TRANSMISSION	8
HITCH, HYDRAULICS & PTO	10
LOADERS & ATTACHMENTS	12
OUR SYSTEMS APPROACH	14
TRACTOR SPECIFICATIONS	15

Fender-mounted PTO & Hitch Raise/Lower switches (Pro models) make 3-point hookups easy – and even a single operator more productive.

B100 Biodiesel ReadySM. B100 biodiesel blends that are BQ9000-certified can be used with recommended Case IH maintenance practices.

Turn Assist steering system option accelerates turning action and minimizes steering effort and fatigue, for repetitive tasks such as loader work.

Industry-leading suspended cab system option reduces vibration and noise to increase operator comfort and productivity with typical row-crop tires.



Easy serviceability.

In addition to an industry-leading 600-hour engine oil interval, regular maintenance, fueling and engine oil checks are all within easy reach at ground level.

Model	PTO HP	Cylinders	Value	Pro
110	90	4	✓	✓
115	95	6	✓	
120	100	4		✓
125	105	6	✓	✓
130	110	4		✓
140	120	6		✓

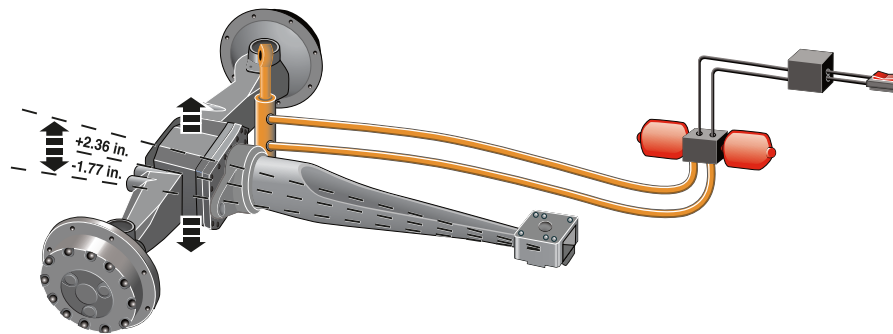
Maximum flexibility to fit your operation, from the economical workhorse “Value” versions to the high-end options and features on the Maxxum Pro line. Choose 2WD or MFD, Cab or ROPS to fit your needs.

LEADING THE INDUSTRY

MAXIMUM VERSATILITY. MULTI-PURPOSE WORKHORSE.

CASE IH ENGINEERS DESIGNED MAXXUM TRACTORS TO MEET A WIDE VARIETY OF NEEDS, ON A WIDE VARIETY OF OPERATIONS, FOR A WIDE VARIETY OF JOBS.

Throughout their history, Case IH Maxxum tractors have set the standard for flexibility, maneuverability and serviceability. Today's fifth-generation Maxxum tractors include six models, ranging from 90 to 120 PTO horsepower, available in "Value" and "Pro" configurations. Get all the industry-leading features you want – and nothing you don't – on this powerful multi-purpose machine.



▲ **Suspended front MFD axle**
option provides a more comfortable ride, increased traction and enhanced fuel efficiency.

▲ **High-visibility roof window**
offers exceptional view of the loader at work in the raised position.

OPERATOR ENVIRONMENT, LIGHTING & CONTROLS

An easy-to-understand instrument panel on the dash displays critical information at-a-glance.

OUTSTANDING ERGONOMICS. AMAZING VIEW.

DESIGNED FOR MAXIMUM OPERATOR COMFORT AND PRODUCTIVITY, THE MAXXUM'S SURROUNDVISION CAB PROVIDES PANORAMIC VIEWS AND ERGONOMICALLY-PLACED CONTROLS.

Unmatched sight lines, ergonomic controls and user-friendly features are hallmarks of the Case IH Maxxum SurroundVision cab. Engineered for comfort and productivity, this best-in-class cab features easy-to-reach controls – including an optional seat-mounted, factory-installed joystick for ergonomic loader operation.



▲ **Industry-leading maneuverability with the Turn Assist option.** Normally, turning the front wheels from one side to the other requires four turns. With Turn Assist, simply push the inside ring, and full left or right turns can be made by turning the steering wheel just 10 degrees left or right, reducing operator effort and increasing productivity.

◀ **Maxxum Pro cab** offers a deluxe, air-ride seat – a heated seat is optional – with adjustable armrests to put you in easy reach of the ergonomically located controls. A tilt and telescoping steering column adjusts to each operator, while a best-in-cab lighting package lets you stay in the field until the job is done.



Case IH cab sets the standard. The SurroundVision cab is big, comfortable and quiet with a 70 dba sound level, plenty of legroom, air conditioning and dual, wide-opening doors.

High-visibility roof panel – for a clear view of the loader at work – is standard on all Maxxum cab models. On the Maxxum Pro cab, the roof panel opens for ventilated comfort.

Industry-leading suspended cab option reduces vibration and noise, and provides an ultra-smooth ride for long days in the field.

More options. Choose from a standard foldable ROPS or SurroundVision cab. There are also deluxe cab options to meet your needs, like heated seat and auto temperature control.





PROVEN PERFORMANCE. CUSTOMIZED OPTIONS.

MAXXUM TRACTORS PROVIDE ALL THE POWER YOU NEED, THE FUEL ECONOMY YOU WANT, AND THE OPTIONS YOU DEMAND.

Get the engine you want with the features you prefer – from the simple, reliable, mechanical rotary fuel injection system in the Maxxum Value models to the high-efficiency electronic direct injection common rail fuel system in the Maxxum Pro models. Case IH also has several transmission options available to meet the specific demands of your operation, whether you need simplicity, maximum field working gears, transport fuel economy or versatility.

Take your pick of transmissions. Choose from the standard 12x12, 24x24 or 16x16 transmission options on Maxxum Value models, or the standard 16x16 semi-powershift transmission with Autoshift on Maxxum Pro models. Also available on Maxxum Pro: an optional 17x16 Semi-Power Shift Econo transmission with Autoshift. The 17th gear provides lower engine RPMs at top road speeds for improved fuel economy and quieter operation during transport.

Maxxum Value models (110, 115, 125)

- 12x12 Synchro
- 24x24 Synchro with two-speed Hi/Lo powershift
- 16x16 Semi-powershift with Autoshift
- Creeper option for low-speed applications are available on all models.

Maxxum Pro models (110, 120, 125, 130, 140)

- 16x16 Semi-powershift with Autoshift
- 17x16 Semi-powershift Econo with Autoshift
- Creeper option available on 16x16

Fuel efficiency and proven reliability

are hallmarks of the proven, Tier III engine in Case IH Maxxum Value models. This mechanical 2-valve per cylinder engine includes minimal electronics, for no nonsense control and horsepower without the frills. Easy to maintain and service, this workhorse will prove itself for years in the field.

Maxxum Pro models feature a Tier III, 4-valve per cylinder common rail electronic engine that generates more power and provides a faster response, improved fuel economy and quieter operation.



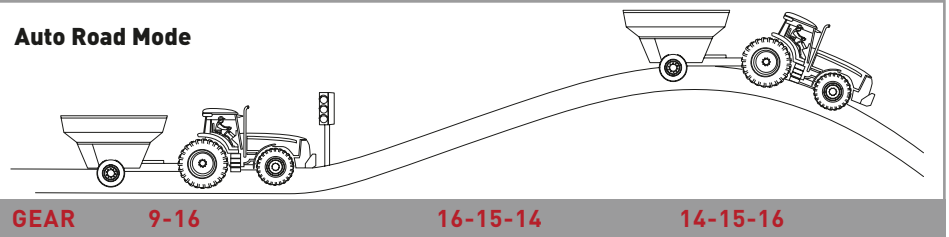
ENGINE & TRANSMISSION

Constant Engine RPM feature maintains engine speed within a desired constant range, ideal for PTO-driven implements.

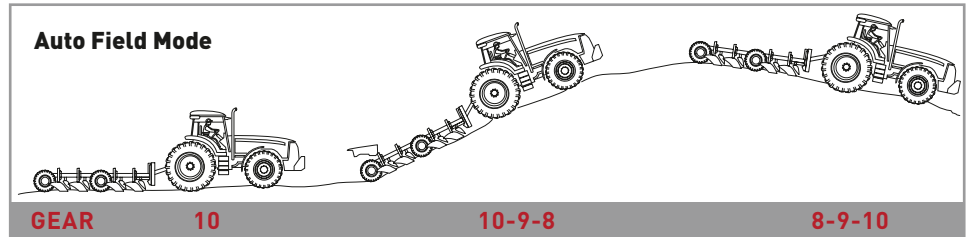
Autoshift option for road and field gears on Maxxum Pro models provides automatic shifting based on load. Auto Field mode maintains engine speed by up-shifting or down-shifting as the load changes – through hills and tough field conditions – ensuring peak fuel efficiency. The Auto Road mode offers the convenience of Autoshift at transport speeds.

AUTOSHIFT

Auto Road Mode



Auto Field Mode



PTO power boost of up to 25 hp is available on Maxxum Pro models, to maintain PTO power when you need it and pull you through the rough spots. This extra burst of power helps you tackle heavy hay conditions or steep grades during transport without losing speed or productivity.



HITCH, HYDRAULICS & PTO

POWERFUL HYDRAULICS. PLENTY OF CHOICES.

MAXXUM TRACTOR HYDRAULICS, HITCH AND PTO SYSTEM PROVIDE POWER, VERSATILITY AND CONVENIENT OPERATION.

Two pumps are better than one when you need to perform steering and hydraulic functions at the same time – without sacrificing performance. And flexibility is better when it comes to 3-point hitch capacity. Choose from a standard 7,509 lbs. (3,406 kg.) or optional 8,813 lbs (3,998 kg.) maximum lift capacity with mechanical draft control on the Maxxum Value models. Maxxum Pro models offer the choice of a standard 9,620 lbs. (4,364 kg.) or optional 12,185 lbs. (5,527 kg.) maximum lift capacity with electronic draft control.



Fast raise/lower hitch switches located on both rear fenders are standard on Maxxum Pro models.

Standard PTO power boost on Maxxum Pro models allows you to maintain rated PTO horsepower even under load, with an extra boost of up to 25 hp when you need it.



▲ **Two dedicated pumps** – one with 10.5 gpm (40 lpm) for steering and lubrication, and one with up to 26.5 gpm (100 lpm) for hitch and remote valves - provide reliable productivity and a maximum 37 gpm (140 lpm) total tractor flow.

Automatic End-of-Row Function available on all Maxxum Pro models provides one-button control of the 3-point hitch, transmission gear selection, engine speed and hydraulic remote valves during headland turns.

Soft Start PTO feature with automatic feathering for smooth engagement is standard on all models.

Auto PTO Management System, optional on Maxxum Pro models, turns the PTO on or off based on a chosen position of the 3-point hitch, giving you one less thing to worry about.

Several 3-point hitch capacity options allow for handling heavy implements. All Maxxum models feature lower link draft sensing to keep the load stable on the hitch, adjustable turnbuckles, telescoping stabilizers to control sway, and flexible link ends for quicker connections and easier implement changes.



LOADERS & ATTACHMENTS

EASY ACCESS. LOADER-READY.

CASE IH MAXXUM LOADERS DESIGNED TO OPERATE AS A SYSTEM.

Maxxum tractors are designed to provide speedy, simple service access. And factory-installed, loader-ready engineering means you can be confident that the tractor and loader are properly matched, fitted, tested – and ready for productive loader work.

Loader Model	L740	L750	L760
Maxxum Model	110, 120, 130	115, 125, 140	125 Pro, 140 Pro
Lift Capacity @ Max. Height* – lbs. (kg)	3,370 (1529)	3,700 (1529)	4,300 (1950)
Lift Capacity @ Max. Height @ Pins – lbs. (kg)	5,080 (2304)	5,350 (2427)	6,050 (2744)
Breakout Force* – lbs. (kg)	4,060 (1842)	4,400 (1996)	5,000 (2268)
Max. Lift Height – in. (m)	145 (3.68)	154 (3.91)	167 (4.24)
Max. Lift Height Under Level Bucket – in. (m)	133 (3.37)	142 (3.60)	155 (3.93)
Clearance w/Bucket Dumped – in. (m)	107 (2.71)	116 (2.94)	129 (3.27)
Reach @ Max. Lift Height – in. (m)	31 (0.78)	31 (0.78)	34 (0.86)
Max. Dump Angle	63°	57°	53°
Reach @ Ground Line – in. (m)	92 (2.33)	100 (2.54)	109 (2.77)

Loader Model	L740	L750	L760
Bucket Rollback Angle	43°	45°	44°
Digging Depth – in. (mm)	8 (203)	8 (203)	6 (152)
Optional Mechanical Leveling System	Yes	Yes	Yes
Raising Time – seconds	3.1	3.5	4.9
Lowering Time – seconds	2.3	2.7	4.0
Bucket Dump Time – seconds	2.6	2.6	3.4
Bucket Rollback Time – seconds	2.0	2.0	2.7
Approximate Weight Without Bucket – lbs. (kg)	1,135 (515)	1,220 (553)	1,385 (628)
Mounting Time – Boom to Tractor	90 seconds	90 seconds	90 seconds
Mounting Time – Implement to Loader	10 seconds	10 seconds	10 seconds

* Measured at 31.5 inches (800 mm) ahead of pin.



▲ **Quick Lock** mounting system is quick and easy. The spring-loaded design keeps the pins with the loader—no pins or parts to search for when attaching the loader. Safety mechanisms are built-in for simplicity and dependability.



▲ **The new Central Hydraulic Valve** is protected by the cross tube and a cover reducing damage to hoses, tubes, and accumulators. The valve allows all hydraulic hoses to connect at one point.



▲ **Short-stroke, large-diameter lift cylinders** offer generous breakout forces and reduced cycle times. Cylinder design and placement create maximum clearance for large front tires.



▲ **Maintenance is a snap** with easy access grease points on the outside of the loader. Snap covers protect all grease zerks from contaminants and keep excess grease off of your tractor and loader during powerwashing.

▼ **Choose from three loader models** – the L740, L750 and L760 – **and more than 70 loader attachments**, including a variety of general purpose, heavy duty and high volume buckets, as well as forks, grapples, bale spikes, grips, lifters and cutters.

Loader-ready options include 2- or 3-function mid-mount loader valves, rear loader mounting brackets, and a seat-mounted joystick for superb maneuverability – all factory-installed.

▼ **Mechanical self leveling loaders on Maxxum tractors** reduce spillage and allow you to move more quickly and confidently.



Multi-Use Forks



Combo Bale/Pallet Forks



Bale Grips



Buckets



OUR SYSTEMS APPROACH

EVERYTHING YOU NEED. ONE EXCEPTIONAL PACKAGE.

CASE IH EMPLOYS A TOTAL SYSTEMS APPROACH, INTEGRATING EQUIPMENT, FINANCING, PARTS AND SERVICE INTO AN EXCEPTIONAL PACKAGE THAT BENEFITS YOU.

Turn to your experienced Case IH specialists when it comes to purchasing the equipment you need for an optimum return on your investment. Highly trained Case IH dealers know how to match the right Maxxum tractor horsepower and capabilities with the precise tools and implements needed to efficiently complete your farming operations, from row crop applications to livestock work and other chores around the farm.

Your Case IH dealer can provide assistance in selecting the right equipment to meet your operation's productivity and financial goals. The Case IH systems approach helps pair tractors with compatible implements, such as planters, cultivators or disks, to achieve peak performance from both pieces of equipment. Your dealer will recommend the ideal option package, with proper tires, weighting and ballast, to help your Maxxum tractor work most efficiently for your specific requirements. Plus, he or she will consult with you in analyzing results, field by field.

You can also rest assured your Case IH equipment will hold its value through trade-in time. Case IH equipment and your dealer's value-added service are the right choices for those who demand more.



CNH CAPITAL FINANCING SOLUTIONS

For those who demand more from a financial services provider, CNH Capital has the right solutions for you. With more than 50 years experience in the agricultural industry, we understand your unique needs and have developed a wide range of financial products and services to support your business.

CNH Capital offers competitive equipment financing with flexible payments that can

be timed to your cash flow. Operating and finance leases are also attractive options that allow you to reduce up-front payments and conserve capital, while benefiting from the latest in equipment technology. For other business financing needs, choose from a variety of credit card programs designed specifically for the agricultural business. CNH Capital can even help you finance crop-input products, land rental.

PARTS AND SERVICE EXPERTISE

You can always count on your Case IH dealer for the professional service and advice necessary to keep your equipment running, season after season.

In addition to helping you find the right product solutions for your operation, your Case IH dealer offers a vast array of parts, services and equipment protection plans—all backed by expert advice and skilled, factory-trained service professionals who can help you before, during and after the sale. Your Case IH dealer carries the complete line of genuine Case IH parts and components, along with full-service maintenance programs and industry-leading warranties that can help keep your equipment running smoothly.

Now you can identify the Case IH parts you need online

- Visit www.caseih.com/na
- Click on Search for Parts under Parts & Service
- Enter your model number or product name
- View a parts list and diagram
- Build a list of the parts you need
- Contact your Case IH dealer to order parts



SPECIFICATIONS

SPECIFICATIONS	MAXXUM 110	MAXXUM 110 PRO	MAXXUM 115	MAXXUM 120 PRO	MAXXUM 125	MAXXUM 125 PRO	MAXXUM 130 PRO	MAXXUM 140 PRO
ENGINE								
Rated PTO	90 hp	90 hp	95 hp	100 hp	105 hp	105 hp	110 hp	120 hp
Rated Full Load	2200 rpm	2200 rpm	2200 rpm	2200 rpm	2200 rpm	2200 rpm	2200 rpm	2200 rpm
Cylinder/displacement	4/273 cu. in. (4.5 L)	4/273 cu. in. (4.5 L)	6/411 cu. in. (6.75 L)	4/273 cu. in. (4.5 L)	6/411 cu. in. (6.75 L)	6/411 cu. in. (6.75 L)	4/273 cu. in. (4.5 L)	6/411 cu. in. (6.75 L)
Number of valves	8	16	12	16	12	24	16	24
Aspiration	Turbocharged/ Aftercooled	Turbocharged/ Aftercooled	Turbocharged/ Aftercooled	Turbocharged/ Aftercooled	Turbocharged/ Aftercooled	Turbocharged/ Aftercooled	Turbocharged/ Aftercooled	Turbocharged/ Aftercooled
Fuel Injection	Direct w/ Mechanical Governor	Electronic High Pressure Common Rail	Mechanical	Electronic High Pressure Common Rail	Mechanical	Electronic High Pressure Common Rail	Electronic High Pressure Common Rail	Electronic High Pressure Common Rail
Fuel tank capacity	46.5 gal. (176 L)	46.5 gal. (176 L)	66.0 gal. (250 L)	46.5 gal. (176 L)	66.0 gal. (250 L)	66.0 gal. (250 L)	46.5 gal. (176 L)	66.0 gal. (250 L)
ELECTRICAL								
Alternator	120 Amp	120 Amp	120 Amp	120 Amp	120 Amp	120 Amp	120 Amp	120 Amp
Battery capacity	960 CCA	960 CCA	960 CCA	960 CCA	960 CCA	960 CCA	960 CCA	960 CCA
TRANSMISSION								
Standard	12F/12R Synchro	16F/16R Semi Powershift	12F/12R Synchro	16F/16R Semi Powershift	12F/12R Synchro	16F/16R Semi Powershift	16F/16R Semi Powershift	16F/16R Semi Powershift
Optional	24F/24R with Hi/Lo Powershift	17F16R Semi Powershift*	24F/24R with Hi/Lo Powershift	17F16R Semi Powershift*	24F/24R with Hi/Lo Powershift	17F16R Semi Powershift*	17F16R Semi Powershift*	17F16R Semi Powershift*
	16F/16R Semi Powershift	—	16F/16R Semi Powershift	—	16F/16R Semi Powershift	—	—	—
Creeper Transmission Options	24x24/48x48/32x32	32x32	24x24/48x48/32x32	32x32	24x24/48x48/32x32	32x32	32x32	32x32
PTO	540/1000	540/1000	540/1000	540/1000	540/1000	540/1000	540/1000	540/1000
HYDRAULICS								
Hydraulic Type	Fixed Displacement	PFC	Fixed Displacement	PFC	Fixed Displacement	PFC	PFC	PFC
Rear Remotes - Std. / Opt.	2/3 Open Center	2/3/4 Closed Center	2/3 Open Center	2/3/4 Closed Center	2/3 Open Center	2/3/4 Closed Center	2/3/4 Closed Center	2/3/4 Closed Center
Steering and Services Pump	10.5 gpm (40 lpm)	10.5 gpm (40 lpm)	10.5 gpm (40 lpm)	10.5 gpm (40 lpm)	10.5 gpm (40 lpm)	10.5 gpm (40 lpm)	10.5 gpm (40 lpm)	10.5 gpm (40 lpm)
Implement Pump	16.6 gpm (63 lpm)	26.5 gpm (100 lpm)	16.6 gpm (63 lpm)	26.5 gpm (100 lpm)	16.6 gpm (63 lpm)	26.5 gpm (100 lpm)	26.5 gpm (100 lpm)	26.5 gpm (100 lpm)
Total Tractor Flow	27.1 gpm (103 lpm)	37.0 gpm (140 lpm)	27.1 gpm (103 lpm)	37.0 gpm (140 lpm)	27.1 gpm (103 lpm)	37.0 gpm (140 lpm)	37.0 gpm (140 lpm)	37.0 gpm (140 lpm)
3-Point Hitch Category	Cat II	Cat II/IIIN	Cat II	Cat II/IIIN	Cat II	Cat II/IIIN	Cat II/IIIN	Cat II/IIIN
Sensing Type	Mechanical Draft Control (MDC)	Electronic Draft Control (EDC)	Mechanical Draft Control (MDC)	Electronic Draft Control (EDC)	Mechanical Draft Control (MDC)	Electronic Draft Control (EDC)	Electronic Draft Control (EDC)	Electronic Draft Control (EDC)
Standard Hitch Lift Capacity	7,509 lbs. (3406 kg)	9,620 lbs. (4364 kg)	7,509 lbs. (3406 kg)	9,620 lbs. (4364 kg)	7,509 lbs. (3406 kg)	9,620 lbs. (4364 kg)	9,620 lbs. (4364 kg)	12,185 lbs. (5527 kg)
Optional Lift Capacity	8,813 lbs. (3997 kg)	—	8,813 lbs. (3997 kg)	—	8,813 lbs. (3997 kg)	12,185 lbs. (5527 kg)	12,185 lbs. (5527 kg)	—
SHIPPING WEIGHT/DIMENSIONS								
Estimated Weight - ROPS 2WD	9,202 lbs. (4174 kg)	—	9,466 lbs. (4294 kg)	—	9,466 lbs. (4294 kg)	—	—	—
- ROPS MFD	9,568 lbs. (4340 kg)	—	9,832 lbs. (4460 kg)	—	9,832 lbs. (4460 kg)	—	—	—
- Cab 2WD	10,083 lbs. (4573 kg)	—	10,348 lbs. (4694 kg)	—	10,348 lbs. (4694 kg)	—	—	—
- Cab MFD	10,449 lbs. (4740 kg)	10,626 lbs. (4820 kg)	10,714 lbs. (4860 kg)	10,626 lbs. (4820 kg)	10,714 lbs. (4860 kg)	10,890 lbs. (4940 kg)	10,626 lbs. (4820 kg)	10,912 lbs. (4950 kg)
Height to Top of ROPS (Up Position)**	114.1 in. (2898 mm)**	—	114.1 in. (2898 mm)**	—	114.1 in. (2898 mm)**	—	—	—
Height to Top of Cab**	111.0 in. (2819 mm)**	114.1 in. (2898 mm)**	111.0 in. (2819 mm)**	114.1 in. (2898 mm)**	111.0 in. (2819 mm)**	114.1 in. (2898 mm)**	114.1 in. (2898 mm)**	114.1 in. (2898 mm)**
Wheelbase - 2WD	93.3 in. (2370 mm)	—	104.4 in. (2652 mm)	—	104.4 in. (2652 mm)	—	—	—
- 4WD	94.9 in. (2412 mm)	94.9 in. (2412 mm)	104.7 in. (2661 mm)	94.9 in. (2412 mm)	104.7 in. (2661 mm)	104.7 in. (2661 mm)	94.9 in. (2412 mm)	104.7 in. (2661 mm)

* 17th gear with reduced engine speed for improved fuel economy during transport.

** With 18.4R34 Tires. Suspended Cab adds 2.6 in. (66 mm).



WWW.CASEIH.COM

SAFETY NEVER HURTS!™ Always read the Operator's Manual before operating any equipment. Inspect equipment before using it, and be sure it is operating properly. Follow the product safety signs, and use any safety features provided.

Case IH is a registered trademark of CNH America LLC. Any trademarks referred to herein, in association with goods and/or services of companies other than CNH America LLC, are the property of those respective companies.

CNH America LLC reserves the right to make improvements in design and changes in specifications at any time without notice and without incurring any obligation to install them on units previously sold. Specifications, descriptions and illustrative material herein are as accurate as known at time of publication, but are subject to change without notice. Availability of some models and equipment builds varies according to the country in which the equipment is used.

