

CORN HEAD PRODUCTIVITY GUIDE



FEATURING

- Safety
- Header Installation
- Service Inspections
- Maintenance
- Adjustments
- Troubleshooting
- Storage
- Accessories



GENERAL INFORMATION

Introduction

Case IH Axial-Flow® combine owners have an edge every harvest season when they put top of the line harvesting technology to work, gathering the crops that sustain their livelihood. With nearly 20 models of Axial-Flow combines over 30 years, tremendous gains have been made in combine efficiency, capacity and reliability. History has also proven the Axial-Flow concept works best when the machine is fed to full capacity.

The AFX rotor boosts threshing capacity with reduced power requirements. Operators easily customize threshing and separating to specific crops and conditions, for the ultimate in capacity and grain quality.

The Axial-Flow cleaning system features a larger, Cross-Flow fan and capacity-matched sieves to deliver the cleanest sample to the tank, while leaving little behind for the birds. Residue handling systems adjust spreading width to distribute discharge evenly behind headers as wide as 42 feet.

Large grain tanks with high-speed unloading matches high yields with large fields for the most efficient harvest. Reserve power maintains ground speed and harvest productivity, even during high demand unloading-on-the-go operation. Easy maintenance requires only a few minutes of the operator's time during hectic harvest seasons. Overall, Case IH offers a balanced capacity approach to high capacity harvesting.

Though crop yields have increased dramatically over these 30 years, the demand on corn heads to gather and deliver the volume necessary to satisfy the hunger of these industry-leading machines has continued to escalate. Today's Case IH corn heads meet these challenges, completing a coordinated harvesting package that helps farmers everywhere reach their profit potential.



CONTENTS

General Information	2-4
Safety.....	5
Header Installation	6-7
Service Inspections.....	8
Maintenance	9-14
Adjustments.....	15-17
Troubleshooting	18
Storage.....	19
Corn Head Kits.....	20-23



GENERAL INFORMATION

Introduction (cont.)

Two basic corn head styles give combine owners flexibility to match crop yields to combine capacity, and even perform advanced residue management.

2200 and 2400 Series corn heads are the same basic design. The 2200 Series is designed to mount on 2500 series Axial-Flow combines, and prior models according to sales specifications. The 2400 Series is specified for 7010 and 8010 series Axial-Flow combines. The 2600 Series chopping corn heads are equipped with integral stalk chopping systems for one-pass harvest and stalk reduction. The 2600 Series can be mounted on all current combines, following capacity and power requirement criteria.

2200 Series corn heads are available in the 6-row 2206, 8-row 2208 and the 12-row 2212. 2206 row spacing can be adjusted from 27½ to 38 inch centers, the 2208 from 22 to 38 inch spacing, and 20 to 30 inch row spacing is available in the 2212.

2400 Series corn heads are available in the 8-row 2408 and the 12-row 2412. The 2208 can be adjusted to row spacings from 22 to 38 inch spacing, and the 2412 from 20 to 30 inch centers.

The 6-row 2606 is applicable only to the 2500 Series combines, and can harvest 30-38 inch rows. The 2608 can be adaptable between the 2500 series and 7010/8010 combine installations, with 30 inch row spacing. The 2612 is specified only for the 7010/8010 on 30 inch row spacing.

Two-piece cantilevered stalk rolls on Case IH Model 2200 and 2400 corn heads eliminate the maintenance requirements of front stalk roll bearings. The heavy-duty roll system allows increased harvest speed and contributes to a lower row unit profile, allowing row units to slip under and grab the lowest hanging ears. Hydraulically adjusted deck plates allow operators to match spacing to stalk conditions, and tough, polyethylene row unit hoods and dividers are adjustable to match crop conditions. Low maintenance gathering chains deliver ears to the 16 inch auger, where ears move swiftly and smoothly to the feeder. Easily maintained cast iron row unit gearcases drive stalk rolls and gathering chains. A two speed drive on the 2200 Series allows operators to tailor row unit speed to ground speed. The single speed drive on the 2400 Series matches row units to ground speed with automatic feeder speed control, standard on 7010 and 8010 combines.

The 2600 Series is equipped with two-blade chopping mechanisms mounted below the stalk rolls. Choppers are driven by independent gearbox drives on each row unit. The chopper drives can be engaged and disengaged on each row independently of other rows. Hydraulically adjustable deck plates and low profile poly dividers combine to deliver every ear to the combine without kernel loss at the head.



GENERAL INFORMATION

Introduction (cont.)

Traditionally, great attention is devoted toward combine thresher and separator adjustments during a performance evaluation; to assure the crop is thoroughly threshed and cleaned, and every kernel is delivered to the grain tank. However, in the brief moment that the crop is gathered and collected by the header, overall combine efficiency can be greatly affected. The impact of incorrect header settings and operation is often downplayed, and not felt to have a significant effect on harvesting efficiency, and ultimately your operation's profitability.

Like Case IH Axial-Flow combines, Case IH corn heads are designed for the best performance in the widest range of harvesting conditions. However, mis-adjustment or operator error may adversely affect combine performance. The Operator's Manual is the best resource to assist operators in evaluating performance and identifying adjustments that will allow the machine to best achieve top performance. This Productivity Guide summarizes the most common questions and answers that affect corn heads. Used together with the Operator's Manual, it will be helpful in evaluating operating conditions and making final adjustments.

Many Case IH combine owners harvest their crops every year with prior model corn heads, dating back to the earlier days of the Axial-Flow era. While there are some differences in the adjustment procedures and maintenance requirements, operators will find much of the information in this Productivity Guide applies to their 1000 Series and earlier corn heads. Using the Operator's Manual for specific information, this Guide will be useful to Axial-Flow owners with older machines.



Safety

Combines and harvesting heads employ the use of aggressive gathering, cutting and conveying components that could present a potential for injury to careless operators or bystanders. Operators must understand and recognize this potential and be constantly aware of their responsibility to keep harvest time a safe and productive season. The best way to assure safe operation is to remember and work by certain basic safety rules that apply to all machine operation, and specifically to harvesting equipment. Specific rules of safe operation are included in the machine Operators Manual and should be reviewed prior to each season's use. Some of the basic rules for combine and combine header operation are:

- When servicing the machine, make accidental contact or entanglement with moving parts impossible by disengaging all drives and stopping the engine before starting service work. This rule applies to all circumstances such as adjustment, repairs or unplugging the machine.
 - Prior to working under or near the combine header, either lower the header completely to the ground, or raise the header completely and lower the header safety stop or stops on the combine feeder lift cylinders (see figure 5.1)
 - During operation, maintain the safest possible work environment by keeping all guards and shields in place and in good condition as intended by the manufacturer
 - Observe and understand warning decals that are placed on the machine in specific areas. See your Case IH dealer for replacement decals, should they become damaged or worn and unreadable.
- To maintain optimal steering control and machine balance, the rear axle of the combine must be adequately ballasted according to the size and weight of the header. Refer to Operator's Manuals for minimum ballasting requirements for specific combine and header configurations. Operating conditions such as hilly or uneven terrain may require additional ballast for best control.
 - When transporting the machine on public roads, at any time of day, make sure all safety warning lights provided with the machine and/or required by local statute are functioning properly for maximum visibility of the machine to other motorists. Make sure the SMV, slow-moving vehicle sign is visible to the rear of the machine, is clean and in good condition. Observe the rules of the road and be a good neighbor. When safe to do so, move over and allow traffic to pass.
 - When transporting a head equipped with the Tall Corn Attachment, lower the attachment fender as described in the corn head Operator's Manual. Flashing warning lights must be fully visible to other vehicle traffic.
 - Wider headers may require transport on a trailer to reduce obstruction to other traffic and for overall safe transport. A few minutes to remove and properly transport the head, even a short distance, is better than spending hours dealing with an accident or an eternity living with the consequences. Specific requirements vary within different states, provinces and localities. Check with local authorities for specific transport regulations.



Figure 5.1

HEADER INSTALLATION

Mounting the Header

Note: Before installing a header on a combine for the first time, verify the header opening width matches the width of the combine feeder (*see figure 6.1*). Stripper extensions on the rear side of the header opening are adjustable, using different mounting hole patterns, to allow the head opening to match the combine feeder. Refer to the header Operator's Manual for the proper header stripper and feeder opening settings for the specific combine model.

When connecting the header to the combine, the following key steps must be observed.

1. Make sure the header engagement cradle on top of the feeder is clean, allowing the header to fully seat in the feeder.
2. Raise the feeder slightly, engaging the header. Stop lifting momentarily, checking to ensure the header is fully engaged in the feeder saddle before lifting the header completely.
3. Lower the header cylinder stops immediately after raising the header to the full height.
4. Immediately connect and secure the header latches to secure the header to the feeder (*see figure 6.2*). The header latches should have a firm over-centering force when latching, to ensure the header is firmly engaged and remains locked during operation.
5. Install latch lock pins to secure latches.

The configuration and latching procedures may vary between combine and header models, however these basic steps are fundamental to all machines.

Make the necessary mechanical drive connections between the combine feeder and the header (*see figure 6.3*). Apply Case IH 251 EP grease to the driveshaft hex or splines and telescoping sections before connecting driveshaft couplers. Grease universal joints and protective shields as instructed in the Operator's Manual.

2200 Series corn heads on 2500 Series combines are driven through a two speed gearbox (1 on 2206, 2 on 2208 & 2212) mounted on the rear side of the header. The speed selection is made by connecting the header driveshaft from the feeder jackshaft to the lower input shaft for low header speed, and the upper shaft for faster header speed.

1. On 2208 & 2212, make sure both drive shafts are connected to the corresponding input shaft on both gearboxes.
2. When connecting driveshafts on 2208 & 2212, rotate one driveshaft until the flighting on the split auger are 180 degrees apart.



Figure 6.1



Figure 6.2



Figure 6.3

HEADER INSTALLATION

Mounting the Header (cont.)

Hydraulic hoses and coupler connections between the feeder and the header should be cleaned thoroughly before hookup to prevent the introduction of dirt and contamination into the combine hydraulic system.

Single point connections such as those on 7010 and 8010 combines have covers that should prevent dirt contamination on coupler surfaces. However, it is suggested to inspect components and clean if necessary before connecting (see figure 7.1).

On the machines using individual hoses between the combine and header, make sure hoses are properly connected to prevent crossing of circuits.

1. The reel fore-and-aft adjustment circuit is used to control the hydraulic deck plate adjustment on corn heads.
2. The reel drive circuit is not used during corn head operation. Connect the hose loop as indicated in the Operator's Manual to provide a free-flow path if the circuit is put on demand.

Make necessary electrical connections such as header control and lighting leads between the combine and header. Check warning lights after making connections and prior to transporting on public roads.

When disconnecting the header from the combine, properly install hose and coupler caps and covers to prevent dirt contamination during storage (see figure 7.2).

Connect combine feeder hoses together as instructed in the specific combine Operator's Manual. These hose connections are necessary to allow free oil flow through circuits that are not in use when the machine is operated with no head, or with headers not using all available hydraulic circuits.

Properly stow header driveshafts in holders during storage or transport.

Leveling the Header

The header should be leveled on non-hillside model Axial Flow combines and combines not equipped with FieldTracker® lateral tilt feeder option.

1. Park the combine on level ground, and ensure both drive tires are inflated to equal pressure.
2. Measure from a common point on both ends of the header, to the ground.
3. If applicable, the draw bolt on the top left side of the feeder is used to make leveling adjustments (see figure 7.3). Loosen the top cover nuts on the combine feeder and the draw bolt jam nuts.
4. Loosen the rear nut and tighten the front nut to raise the left end of the head. Adjust in the opposite direction to raise the right end of the header.

Refer to the combine Operator's Manual for any specific variation to these general instructions and for proper hardware torque specifications after adjustment is complete.



Figure 7.1

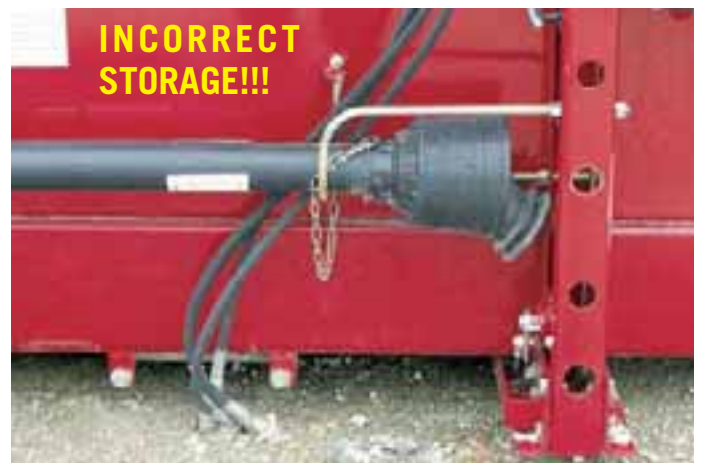


Figure 7.2

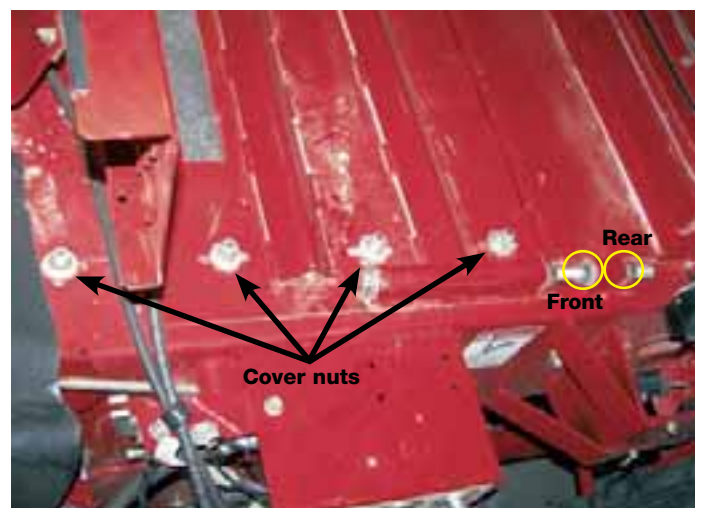


Figure 7.3

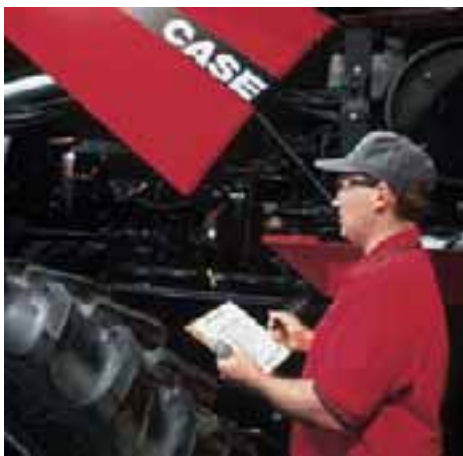
SERVICE INSPECTIONS

Take Full Advantage of its Capabilities

Have you, or did someone you know purchase a new combine in the last few years and continued to use it in much the same way as the combine it replaced? Many times operators do not fully realize and take advantage of modern features. As a result of not fully utilizing the combine's features, the owner may not be receiving all the value from the money spent.

Many of the items suggested in this booklet can be completed by the owner when preparing for the season or the operator when starting a new field. Other adjustments, service procedures or repairs might be more effectively completed by your dealer's trained service technicians.

MAINTENANCE CHOICES, BE PREPARED FOR DEMANDING CONDITIONS



Ask your Case IH dealer about Customized Maintenance Inspections. It is a proactive way to be sure your combine will operate at its best possible performance when you need it.

Customized Maintenance Inspections include a visual and functional inspection of your combine. They can be used as a pre-season or as a post-season tune-up.

Benefits include:

- Increased productivity
- Less downtime during the season
- Lower operating costs
- Improved fuel economy
- Documented maintenance
- Service by Case IH trained technicians
- Service with Genuine Case IH lubricants, filters and parts

The combined advantages of Customer Maintenance Inspection services should result in a lower cost of ownership and higher resale values.

Documented Service Promotes High Resale Value

When you schedule your equipment for annual maintenance inspection services, your Case IH dealership places an annual UPTIME Action Maintenance decal on your equipment after each inspection, distinguishing your commitment to keep your machines running in top condition. Not only does annual maintenance support your productivity in the field, each decal symbolizes completed service—which may increase the resale value of your equipment.

Because Case IH technicians use Customized Maintenance Inspection checklists for each inspection, you can rest assured the service is thorough and nothing is overlooked.



MAINTENANCE

An annual pre- or post-season combine and header inspection professionally performed by your Case IH dealer is a wise investment toward insuring your harvest season against wasteful breakdowns and downtime. Conscientious daily and periodic maintenance on the part of the combine owner/ operator completes the equation that equals on-time, efficient harvest with little lost time. And as every farmer knows, time is money, especially when it comes to getting your crop out of the field and on its way to market.

The following table (*see table 9.1*) is a basic representation of combine corn head maintenance needs. Since this guide is general in nature, and cannot reflect exact needs for all models, refer to your Operator's Manual for the most complete information.

REF	HOURS	DESCRIPTION	CHECK	LUBE	LUBRICANT
1	10	Cross Auger Drive Chains		X	Chain Lube/SAE 30
2	50 ①	Gathering Chains	X	X	SAE 30
3	50	Corn head Drive PTO u-joints & slip joints		X	EP Grease
3	10	Corn head Drive PTO u-joints & slip joints (2600 Series)		X	EP Grease
4	50 ② 300 ③	Row Unit Slip Clutches		X	EP Grease
5	100	Auger Drive Slip Clutch		X	EP Grease
5	50	Auger Drive Slip Clutch (2600 Series)		X	EP Grease
6	50 ①	Row Unit Gearbox	X		0-51H-EP
6	100/400	Row Unit Gearbox (2600 Series)	X	X ⑥	SAE 80W90
7	300	Row Unit Drive Chain Cases	X		SAE 80W90
8	50	Two Speed Gearboxes (2200 Series)		X	SAE 80W90
9	50 ①	Drive Chain Tension	X		
10	100	Free Movement of Front Gathering Chain Front Idlers	X		
11	300	Stalk Roll Knife Wear and Adjustment	X		
12	300	Deck Plate Wear and Adjustment	X		
13	300	Ear Saver Condition	X		
14	10 ①	Hardware Torque Check	X		
15	300	Auger Slip Clutch	X		
16	100/400	Stalk Chopper Gearcase	X	X ⑥	SAE 80W90
17	100	Auger Quick Couplers (2608 folding)		X	EP Grease
18	10	Automatic Lube System Tank (2600 Series)	X		Case IH Hy-Tran®
19	50	Stalk Roll Front Bearings (2600 Series)		X	EP Grease

Table 9.1

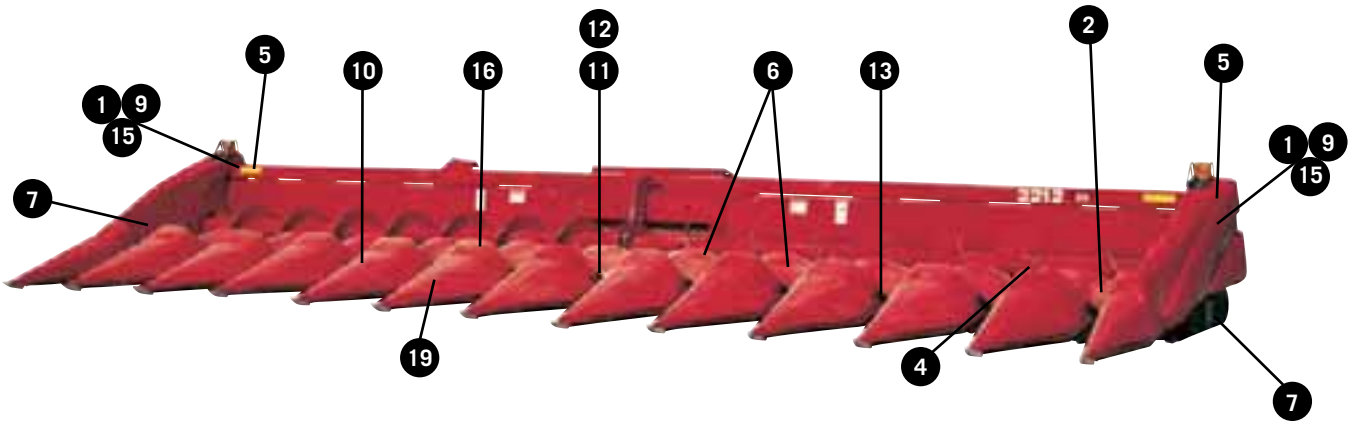
① Oil/Check on initial run-in

② Prior to SN HAJ0003516

③ SN HAJ0003516 & later

⑥ Replace

MAINTENANCE



Caution:

- When servicing the machine, make accidental contact or entanglement with moving parts impossible by disengaging all drives and stopping the engine before starting service work. This rule applies to all circumstances such as adjustment, repairs or unplugging the machine.
- Prior to working under or near the combine header, either lower the header completely to the ground, or raise the header completely and lower the header safety stop or stops on the combine feeder lift cylinders.

Chains

Chains and sprockets should be inspected for proper tension as specified in Operator's Manuals (see figure 11.1). Lubrication such as chain lubricants or SAE 30 engine oil may be used on chain drives. However, keep in mind that once a chain is lubricated, it will likely attract a greater degree of contamination and will require consistent lubrication from that point, throughout the life of the chain. Regular lubrication flushes contaminants from the chain, and provides protective lubrication. Lubricate chains at the end of the day when the chain is warm, and oil flows more freely into critical areas. Oil cools and sets, and is less likely to be thrown off at start-up.

Deck (Stripper) Plates

Inspect deck plates for wear along the upper leading edge of the plates (see figure 11.2). As wear occurs and uneven clearance develops along the length of the deck plates, adjustment will be difficult.

Areas of the plates that are too wide may allow ears to slip through, or result in excessive butt shelling; while areas adjusted too close may prevent stalks from passing freely through to the stalk rolls. The rolls may cut the stalks, which will then be drawn through the combine with the ears. Excessive material passing through the combine lowers capacity and makes adjustment for a clean sample difficult.

Stalk Rolls

CAUTION: A sharp pinch point exists between the weed knives and stalk roll points when knives are properly adjusted. Remove weed knives before working on stalk rolls to prevent injury.

Inspect stalk rolls for signs of excessive wear along the fluted knife edges. Excessively worn rolls no longer aggressively pull stalks through the deck plates, resulting in stalks pulling out of the ground, plugging the row unit (see figure 11.3).

Follow Operator's Manual procedures when replacing stalk rolls. Correct application of anti-seize compound, and using steps to ensure rolls are properly seated and tightened are important in correct row unit operation and future service operations. Optional sharpened stalk rolls are available to provide greater stalk cutting and residue reduction.



Figure 11.1



Figure 11.2



Figure 11.3

MAINTENANCE

Ear Savers

Inspect ear saver flaps for condition, and wear or damage that may reduce their effectiveness. Replace as necessary (see figure 12.1).

Weed Knives

Weed knife operating clearance is adjusted so knives strip the fluted sections of the stalk rolls of material, preventing wrapping (see figure 12.2). Loosen mounting bolts, and adjust knives to $\frac{1}{8}$ to $\frac{3}{16}$ " clearance to the highest roll flute.

Note: Remove head drive shafts to allow row units to be easily rotated during adjustment.

Knives are worn out and must be replaced when they are adjusted properly but no longer effectively keep the rolls clean.

Gathering Chains

Gathering chains should be checked for excessive wear between pins and links, on the front and ends of chain lugs, and along the gathering chain guide (see figure 12.3).

Make sure chains are properly timed. The lugs should be evenly spaced between each other for efficient movement of ears to the auger. The number of links between lugs on some 2600 Series gathering chains alternates between six and eight links. Time chains so the number of links in opposing sections of chain is consistent from one side to the other.

Inspect free movement of the spring loaded gathering chain idlers. If the assemblies bind, disassemble and inspect for worn parts. Lubricate the parts with dry graphite during re-assembly.

Row Unit Drive Chain

Adjust chain tension by removing the inspection cover, and applying moderate pressure to the strand between the large sprockets. Adjust the idler if necessary to achieve slack of $\frac{3}{8}$ - $\frac{1}{2}$ ".



Figure 12.1



Figure 12.2



Figure 12.3

Tighten the idler bolt to 150 ft lb after adjustment is correct.

Re-install the cover, and check for oil leakage after approximately one hour of operation.

Check the chain case oil level every 300 hours. Lower the head fully and remove the plug (A). The oil level should be to the bottom of the plug hole (see figure 12.4).



Figure 12.4

Auger Drive Chain

The auger is driven from both sides on 8- and 12-row heads (see figure 13.1). If the head has a single speed drive, an idler on the top side of the auger chain is moved toward the chain to adjust slack to $\frac{3}{8}$ - $\frac{1}{2}$ " at the center of the lower strand, while applying moderate pressure.

Two speed drives are adjusted by loosening the intermediate gear plate, then lightly snugging the attaching bolts. To adjust chain tension, pry upward on the intermediate gear plate, through the slots on the outside of the end sheet. Pry upward on the front and rear of the plate to move the plate to the correct adjustment position. Adjust to $\frac{3}{8}$ - $\frac{1}{2}$ " slack, and tighten the mounting bolts.

The auger slip clutch (A) is adjusted to drive the auger under normal conditions. Do not over-tighten the adjustment. The clutch must still be allowed to slip under extremely heavy load to protect the auger.

Row Unit Slip Clutch

In normal operation, the row unit slip clutches are rarely, if ever, activated during harvest (see figure 13.2). To check the function of the clutch, the unit should be "exercised" to ensure it slips properly to protect the row unit.

Before "exercising" the clutch, make sure it is properly lubricated according to service intervals and hours of operation.

The row units are held from turning with a wooden block inserted between the stalk rolls, and the hex unit drive shaft is turned with a torque wrench. The torque necessary to turn the shaft should be between 446 and 324 ft. lb. If the slip clutch does not perform to specifications, remove it as a unit, and contact your Case IH dealer for assistance.

Row Unit Gearbox

The oil level in the row unit gearboxes should be checked every 300 hours. Lower the head fully, and remove the check plug on the top of the gearbox just forward of the auger (see figure 13.3).

The oil level should be 1" below the top of the gearbox. Use only grease specified in the Operator's Manual.



Figure 13.1



Figure 13.2



Figure 13.3

Front Stalk Roll Bearings (2600 Series)

Grease the front stalk rolls every 50 hours as indicated in the Operator's Manual maintenance guide (see figure 13.4).

NOTE: Older 1000 Series Case IH corn heads are also equipped with front stalk roll bearings. Consult the 1000 Series Operator's Manual for service requirements.



Figure 13.4

MAINTENANCE

Stalk Chopper Knives (2600 Series)

Check stalk chopper knives daily during heavy use. Knives can be reversed if one side is worn or damaged. Always perform the same service on both sides of the chopper rotor to maintain balance (see figure 14.1).

Balance is critical to smooth stalk chopper and corn head operation. Knives should be replaced as opposed to sharpening to maintain consistent system balance.

Stalk Chopper Gearbox (2600 Series)

Remove the check plugs every 100 hours of operation. The oil level should be to the mark on the dipstick attached to the plug (see figure 14.2).

Header Height Control

Automatic header height control is available to relieve the operator of the need to manually control the operating height of the header and divider points. Many combines are also equipped with the FieldTracker® lateral float feature which allows the head to tilt to closely follow ground contours on rolling terrain. This is especially important to maintain correct operating height with wide headers on uneven ground. The combined effect of these features greatly reduces operator fatigue, while increasing efficiency on long harvest days.

Sensors for the system are installed under the center divider, and each end divider (see figure 14.3). The center sensor provides height sensing, while the two outer sensors provide both height and tilt sensing.

The sensor rod is restrained with a chain at the rear of the rod to prevent the sensor from dropping out of range with the head is raised. The chains should be adjusted so all three sensors touch level ground at the same time when the head is lowered.

NOTE: Use the manual tilt control on the combine multi-function handle to level the head before checking sensor ground contact.

CAUTION: Lower the header cylinder lift stop before entering the area below the dividers to adjust sensor rod chains.

Calibration

The header control system on the combine must be calibrated to “learn” the electrical values of the sensors, and the relative position of the head. The calibration procedures vary between combine models, but are basically capable of performing the calibration with little operator input. See the combine Operator’s Manual for header control calibration and operation instructions and procedures.



Figure 14.1



Figure 14.2



Figure 14.3

ADJUSTMENTS

Deck Plates

Deck plates are adjusted to operator preference, depending on performance and operating conditions (see figure 15.1). Adjustment may be performed manually by loosening the plate attaching hardware and moving the deck plate to the desired position; or hydraulically by selecting the reel fore-and-aft adjustment control in the combine cab. With hydraulic adjustment, the left deck plate moves to the desired setting, which is shown on an indicator on the top of the header.

The deck plates are meant to strip the ears from the stalk, as the stalk is pulled downward by the stalk rolls. Plates that are too wide may allow ears to slip through, or result in excessive butt shelling. Deck plates that are adjusted too close may prevent stalks from passing freely through to the stalk rolls. Stalks will likely be cut, and enter the combine feeder. Excessive trash from stalks will adversely affect cleaning performance.

Auger Height and Stripper Clearance

The auger height above the header bottom trough is factory set to 1" clearance. The clearance to the auger strippers on the rear of the header is normally $\frac{1}{4}$ - $\frac{3}{8}$ " (see figure 15.2).

Variations from these settings may be to increase clearance to reduce kernel damage when harvesting food grade crop, or decreasing clearance if vines tend to wrap around the auger.

The center bearing support on heads with split augers can be adjusted, and will affect auger clearance. The center of the auger can be raised to improve feeding in dry conditions.

Auger position adjustment is made by first loosening the auger chain tension. Continue by loosening the four attaching bolts that mount the auger bearing retaining plate to the header end sheet (see figure 15.3). Move the auger to the desired position, and snug the hardware. Make sure both sides are adjusted evenly, then finish tightening the mounting bolts. Re-tension the auger drive chain.

Dividers

All divider points can be folded up to allow easy access to the entire row unit (see figure 15.4). Refer to the Operator's Manual for folding and propping procedures, and steps necessary if complete divider removal is desired.



Figure 15.1



Figure 15.2



Figure 15.3



Figure 15.4

ADJUSTMENTS

Dividers (cont.)

Divider points can be adjusted vertically for different crop conditions and header operating height. For example, dividers may be adjusted higher when the head is operated close to the ground so gathering chains can retrieve low-hanging ears.

Remove the pins in the divider stop brackets, and raise or lower the bracket (see figure 16.1). Lower the divider back onto the stop and check height. Fine adjustment can be made by loosening the bracket retaining bolts and moving the brackets slightly in the slotted holes.

Adjust outer divider points approximately 2" higher than the remaining dividers for greater operating clearance.



Figure 16.1

Auger Drive Speed

2006 and later heads are equipped with a two speed auger drive, which was available as an option on earlier heads. Higher speeds may be selected for higher yielding crop for more effective feeding.

To change auger speed, the intermediate sprocket bearing plate is loosened, and the sprocket is removed from the support (see figure 16.2). Turn the sprocket so the larger sprocket is toward the outside of the head for higher speed, and install with the smaller sprocket toward the outside for lower auger speed. Re-install the sprocket and tighten the chain as instructed in the Operator's Manual.



Figure 16.2

Row Unit Speed (2200 Series)

Row unit speed is adjustable by changing feeder speed on combines equipped with variable speed feeder.

For combines with fixed speed feeders, 2200 Series corn heads are equipped with two speed header drive gearboxes; one drive gearbox on 2206, two on 2208 and 2212 (see figure 17.1).

Lower row unit speed may be desired when harvesting high moisture corn to reduce the amount of debris that enters the combine.

In dry conditions, or when combining at higher ground speeds, operating the head at the faster speed will provide improved feeding and residue processing.

Stalk Roll Knives (2600 Series)

The stalk rolls are adjusted at the factory with a 4¼" center distance. However, the front bearing retainers can be adjusted up to ⅛" side-to-side for fine adjustment to reduce damage to fragile crops. Adjustments may also compensate for stalk roll wear. Perform identical adjustments to both stalk rolls according to the multi-step procedures in the Operator's Manual.

The full-length weed knives should be adjusted to have an even clearance of .040" to the stalk roll knives after stalk rolls are adjusted, or to compensate for wear (see figure 17.2).

Header Angle

The header angle can be adjusted to change the relationship of the header and the ground surface to suit different operating conditions and combine setup.

For example, tipping the head forward slightly (see figure 17.3) may allow gathering chains and stalk rolls to operate closer to the ground when the head must be operated to reach low hanging ears or get under down crop. Likewise, the head may be tipped rearward in fields with rocks or debris to reduce the chances of picking up objects which could result in internal combine damage.

Operators are reminded that changes to the combine, or changing operating conditions, can affect the relationship between the header and the ground. For example, changing rear tire size, or moving the rear axle to a higher or lower position "tips" the entire machine and changes header fore-and-aft position. In general, if the rear of the combine is raised, the front of the header is raised to counteract the change in combine attitude.

The adjustment is made by loosening the capscrews attaching the feeder cradle to the combine feeder (see figure 17.4). The combine Operator's Manual will provide full details on correct header angle adjustments.

ADJUSTMENTS



Figure 17.1

Header Angle (cont.)

Park the combine on level ground, and lower the head until the row unit skid shoes are on the ground. Use an inclinometer* setting on the deck plates to measure head angle. The row units should be no less than 21 degrees from level.

* An inclinometer is a simple adjustable level tool that can be purchased at most hardware stores.

Stalk Chopper (2600 Series)

Each row unit on the 2600 Series corn heads has an independent gearbox to drive the integral stalk chopper (see figure 17.5). The stalk chopper can selectively turned on or off for each individual row.

CAUTION: Lower the header cylinder lift stop before changing the stalk chopper gearbox selection.

The stalk chopper gearbox shift lever is placed in the upper hole to engage the chopper drive, and in the lower hole to disengage the drive (see figure 17.6).



Figure 17.2

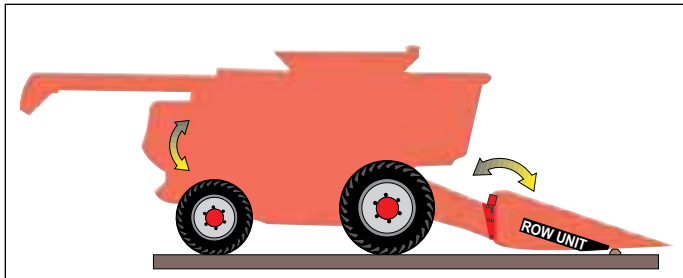


Figure 17.3



Figure 17.5



Figure 17.4



Figure 17.6

TROUBLESHOOTING

Troubleshooting Guides

Operator's Manuals include troubleshooting guides that apply to the specific header. Some general troubleshooting issues that affect the performance of virtually any corn head are in the following table (see *table 18.1*).

PROBLEM	PROBABLE CAUSE	CORRECTION
Loss of ear corn in field	Off planter rows, picking "guess" rows Incorrect ground speed Divider points too high Deck plate clearance incorrect Incorrect gathering chain speed Ear savers worn or damaged	Pick rows as they were planted Match ground speed to header speed Lower points to get under low ears Move plates closer together Slow down if ears tumble out, speed up if ears building up on chains Replace ear savers
Loss of shelled corn at head	Deck plates adjusted too wide	Decrease deck plate clearance
Excess stalk going into combine, stalks pulled out of ground	Deck plates too close Deck plates not even front to rear, closer at rear Excess ground speed Gathering chains too low, catching plant roots	Increase deck plate clearance Adjust deck plates evenly front to rear Reduce ground speed, match head speed Lower divider points, raise head
Plugging	Stalks breaking at deck plates, pulled out of ground Loose gathering chains Off planter rows, picking "guess" rows Trash wrapping on stalk rolls Material catching on shielding Worn stalk rolls Material not moving through auger Stalks plugging in row unit throat opening	SEE PREVIOUS PROBLEM/CAUSE/SOLUTION Adjust gathering chains Pick rows as they were planted Set weed knives closer to rolls, check for worn knives Check for loose or damaged sheet metal Replace stalk rolls, use sharpened rolls Set auger closer to stripper Remove ear savers
Picking up rocks, clods	Head operated too low	Lower divider points, raise head
Down corn not feeding into head	Corn head angle too steep	Adjust combine feeder face adapter angle, flatten corn head angle Lower divider points

Table 18.1

Storage

Proper storage of the corn head can have a significant impact on the ability to achieve acceptable header performance immediately on start-up in successive seasons. Storing the unit in a dry environment, and protecting the unit from rust and corrosion during storage is especially important.

The degree of “polishing” of components during operation makes many areas of the header susceptible to moisture related damage. At the same time, the “polishing” indicates that smooth, clean surfaces are essential to promote crop flow in the header.

1. Clean the header with high-pressure water to remove mud, dirt, crop residue and sap from the header. Use care to direct high pressure water away from sealed bearings, potentiometers and other sensitive components.
2. After the header is cleaned and dry, lubricate the header as specified in the Operator's Manual
3. Inspect the drive chains, gathering chains, deck plates, stalk rolls and auger and replace any worn or damaged parts.
4. Put a film of protective oil on the gathering chains, deck plates and stalk rolls, and the bottom of the header trough.
5. Lubricate drive chains.

Returning the Unit to Service

1. Clean the unit and remove any rust or corrosion that may have developed during storage.
2. Lubricate the header.
3. Re-inspect the unit and replace any worn or damaged parts before returning to the field.
4. Verify the entire automatic header control sensor rods are free to move through their entire range of operation.
5. Lubricate drive chains.
6. Start and run the header at slow speed. Check for excessive vibration or noise, and confirm proper operation of all drives and bearings.

CORN HEAD KITS

Stalk Roll Kits



For Case IH 800*/900/1000 Series Corn Heads

***Requires row unit re-work.**

Aggressive new life for your 800/900/1000 series corn heads.

Stalk Roll Assembly

Kit includes:

- LH and RH Roll Assembly
- Spiral augers
- Lower support shims
- Lower support and hardware

Part No. B92764A – 1 Row

Stalk Roll Assembly with knives

Kit includes:

- LH and RH Roll Assembly with knives
- Spiral augers
- Lower support shims
- Lower support and hardware

Part No. 82797036 – 1 Row

Complete Roll and Chain Assembly

Kit includes:

- LH and RH Roll Assembly
- Spiral augers
- Lower support shims
- 2-Gatherer chain drive sprockets
- 2-Gatherer chain idler sprockets
- Drive sprocket attaching hardware
- 2-Gatherer chains

Part No. B92766A – 1 Row with regular duty chains

Part No. B96434 – 1 Row Extenda-Wear chains

Uptime Packs

- Handy Service Packs
- Includes hardware
- Genuine Case IH components



Idler Sprocket Kit
Part No. B95573



Drive Sprocket Kit
Part No. B95574A



Ear Saver Kit
Part No. B95582

CORN HEAD KITS

Stalk Roll Repair Kits For Corn Heads

- Kits include components to rebuild one row
- All components are original equipment quality
- Corn head knives have superior tungsten carbide coating for longer wear
- Corn head knife hardware is Grade 8
- All hardware is included

Standard Kit - 1 Row

Kit includes:

- Corn head knives (8)
- Hardware

Part No. B94532 for 900 and 1000 series corn heads

Part No. B94594 for 800 series corn heads



Chain/Sprocket Kit – 1 Row

Kit includes:

- Gatherer chain drive sprocket (2)
- Gatherer chain idler sprocket (2)
- Gatherer chains (2)
- Hardware

Part No. B95214 for 900 and 1000 series corn heads

Part No. B95215 for 800 series corn heads



Deluxe Kit – 1 Row

Kit includes:

- Corn head knives (8)
- Hardware
- Gatherer chain drive sprockets (2)
- Gatherer chain idler sprockets (2)
- Gatherer chains (2)

Part No. B94533 for 900 and 1000 series corn heads

Part No. B94541 for 800 series corn heads



Corn Head Ear Saver Kit

- Reduce ear loss
- High-strength rubber
- Hardware included

Part No. B94550A Steel Hoods

Part No. B94838A Poly Hoods



CORN HEAD KITS

Stalk Roll Repair Kits for 2200/2400 Series Corn Heads

- Kits include components to rebuild one row
- All components are original equipment quality
- Corn head knives have superior tungsten carbide coating for longer wear
- Corn head knife hardware is Grade 8
- All hardware is included

Standard Kit - 1 row

Kit includes:

- Corn head knives (4)
- Special hardware
- Part No. B95583A



Part No. B95583A

Deluxe Kit - 1 Row

Kit includes:

- Gatherer Chains (2)
- Idler Sprocket (2)
- Drive Sprocket (2)
- Knife (4)
- Special Hardware
- Part No. B95585A - Kit with chrome pins in chains
- Part No. B96153A - Kit with STD pins in chains



Part No. B95585A

Stalk Roll Assembly - 1 Row

- Stalk Roll tube, knife style (2)
- Knife (4)
- Point RH (1)
- Point LH (1)
- Gatherer Chain (2) with chrome pins
- Idler Sprocket (2)
- Drive Sprocket (2)
- Special Hardware



Part No. B95584A

Corn Head Repair Kit

- Gatherer chains
- Sprockets and hardware
- Packaged
- Part number B96154A - Kit has chain with standard pins
- Part number B96155A - Kit has chain with chrome plated pins



CORN HEAD KITS

Hood and Divider Kits for 2200/2400 Series Corn Heads

- Color-matched high-strength polyethylene shell over heavy-duty steel frame
- High-strength polyethylene shell is resistant to cracks, dents and rust for reduced maintenance
- Completely assembled and ready to install
- Includes ear saver
- Replaceable heavy-duty cast point to reduce damage to dividers
- For all 2200/2400 series corn heads—20-22", 30", 36-38" and 70 cm



Ear Saver Kit
Part No. B95582

PART NUMBERS

Divider Assemblies

- 86620219 - Inner 20"-22"
- 86620220 - Inner 30"
- 86620221 - Inner 36"-38"
- 86620222 - Inner 70 cm
- 86620218 - Outer - All row spacings

* Poly Hoods and Dividers are also available for 900 and 1000 Series Corn Heads

Hood Assemblies

- 86620223 - Inner 20"-22"
- 86620224 - Inner 30"
- 86620225 - Inner 36"-38"
- 86620226 - Inner 70 cm
- 86620217 - Outer LH - All row spacings, 2200 Series
- 86620216 - Outer RH - All row spacings, 2200 Series
- 86978714 - Outer LH - All row spacings, 2400 series
- 86978715 - Outer RH - All row spacings, 2400 series



Inner Divider



Outer Hood



Inner Hood

See your dealer for your Axial-Flow Combine Product Support Kit Catalog and Productivity Guide!





Now you can identify the Case IH parts you need online

- Visit www.caseih.com/na
- Click on Search for Parts under Parts & Service
- Enter your model number or product name
- View a parts list and diagram
- Build a list of the parts you need
- Contact your Case IH dealer to order parts



Safety Never Hurts!™ Always read the Operator's Manual before operating any equipment. Inspect equipment before using it, and be sure it is operating properly. Follow the product safety signs, and use any safety features provided.

Case IH and CNH Capital are registered trademarks of CNH America LLC. Any trademarks referred to herein, in association with goods and/or services of companies other than CNH America LLC, are the property of those respective companies.

CNH America LLC reserves the right to make improvements in design and changes in specifications at any time without notice and without incurring any obligation to install them on units previously sold. Specifications, descriptions and illustrative material herein are as accurate as known at time of publication, but are subject to change without notice.

This literature has been published for worldwide circulation. Availability of some models and equipment builds varies according to the country in which the equipment is used.

